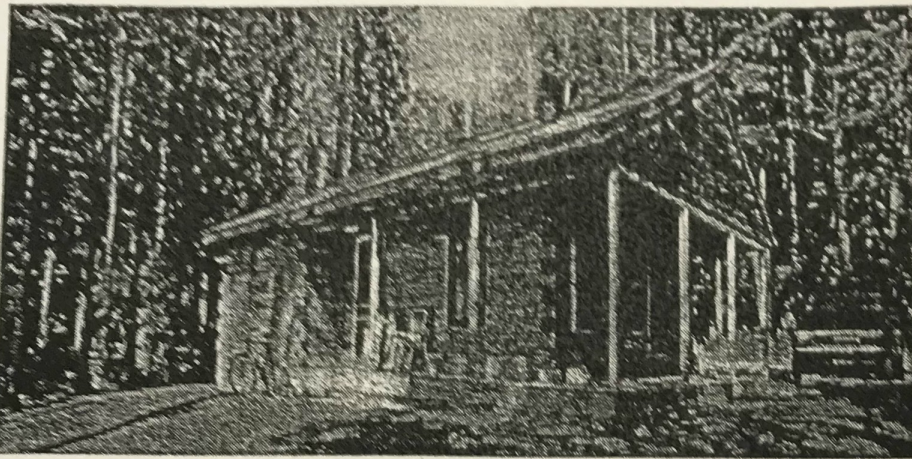


continued from page 9

registration. For anglers, there are plenty of warm-water fish and pan fish in Lake Jean. Also available in the summertime

at Rickett's Glen are Environmental Interpreters who offer guided walks and campfire programs..



*One of the Park's modern cabins*

Wintertime is also a great time to visit Ricketts Glen. The falls show off their nature-perfect beauty as icicles form on the rocks beside the rushing waters. When the snow is on the ground and clear blue skies above, seeing the ice formations along the cliffs, and the vista of the icy water rushing over the rocks, makes you appreciate why this park deserves to be considered a National Natural Landmark.

The park offers cross-country skiing, ice fishing on Lake Jean, snowmobiling trails, ice climbing and camping during the winter

months. Nine thousand acres are open to hunting. Common game species are deer, turkey, grouse, bear, rabbit, pheasant and squirrel.

For more information contact: Department of Conservation and Natural Resources Ricketts Glen State Park R.R. 2, Box 130 Benton, PA 17814-8900 or call (717) 477-5675.

May 2001